



# *The luxury of control*

Smart Systems for  
Yacht Entertainment,  
IT and Security

**ICON CONNECT**

London - Monaco

Heesen, 51m. Full integration of audio & video systems including iPad control, Crestron and Bang & Olufsen remotes, together with a bespoke 3m LED video wall. Photo Credit Heesen.



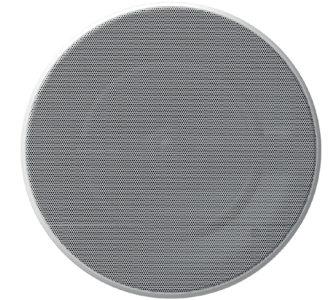
## Audio Visual Installations

Whether you love music, cinema or TV shows, we have elegant stylish solutions to compliment the most beautiful interiors.

Entertainment should be entertaining!  
This requires high quality video, detailed accurate audio and above all ... Ease of Use.

Our systems enhance your listening and viewing experience, with movie and music libraries, multi-language TV, iTunes / Airplay or even existing vinyl record collections!

We will work with you to tailor your systems, based on brand preference, performance expectations, aesthetics and budget.



Damen Seaxplorer, 62m.  
Integration of audio video equipment, IT infrastructure and security systems on this 62m marvel of technology.  
Photo Credit Damen





Damen, 74m. Full technology solution for one of the largest "limited edition" Amels launched to date Systems included full AV/IT security, Antennas and a spectacular outdoor cinema .

Photo Credit Jeff Brown



## Climate Control

The correct room temperature turns a yacht into a haven.

Whether it is shelter from a chilly New England dawn or the brutal summer heat, we provide convenient integrated control of your climate management systems.



## Lights & Blinds

Managing light, either natural or artificial is essential to the ambiance of a room.

Using silent blinds and curtains and pre-set lighting scenes such as Welcome, Morning, Evening or Cocktail, you are able to transform the mood of a room with a simple touch.



## Security

Situation awareness brings peace of mind.

Your safety is of paramount importance to us. We continually monitor the market for the latest CCTV and access control solutions to empower your crew with simple but effective security systems.... putting you in control!





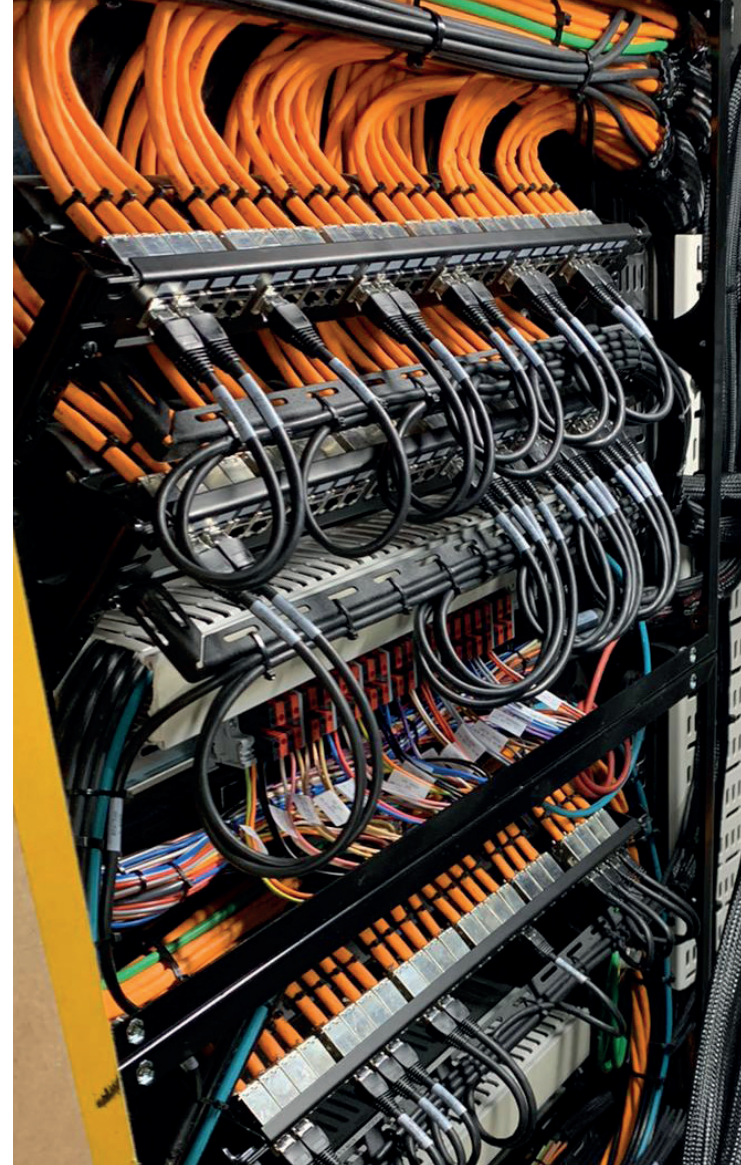
## Control systems

---

At the core of everything we do is a simple but powerful control interface based on the familiar iPad.

Our philosophy is to minimise button presses so watching your favourite TV channel is as simple as selecting <TV> <Channel> et voila!

We combine the iPad controls with stylish programmable lighting keypads providing a familiar wall mounted "Switch" in a variety of high quality finishes to compliment any interior.



## IT

---

Internet connectivity has become the single most important service for both personal and business needs.

The "Yacht Network" is the connectivity grid on which all of our systems communicate. This means that the IT infrastructure must be of the highest quality to ensure reliable WiFi, Internet, Video Conferencing, Streaming, Control and System Maintenance.





## Services

---

We provide a comprehensive support structure for your 4G/5G, VSAT, TV services, Inmarsat and technical support needs all around the world.

Our independent advice will help you to research and contract the most appropriate service for your cruising profile at competitive rates.



## VSAT & 4G/5G

Depending on your cruising grounds and needs (from e-mail to Ultra HD Streaming), we will recommend the perfect data service plans. Solutions include VSAT; 4G/5G; bandwidth bonding; short term upgrades; FBB, SAT C, downgrades and lay-ups for the optimum cost efficient solution for your program.

## TV SERVICES

Enjoy entertainment and sports channels whilst cruising, such as Kartina TV, Sky TV (UK and Italy), DirecTV (US, Caribbean), DishTV US, IPTV (UK, Arab,...)



## STARLINK

Icon Connect will help to assess each yacht and advise the best route to adopting Starlink, the new High-speed, low-latency internet with up to 350 Mbps download speeds. Similar to VSAT, service contracts are direct between customer and Starlink as the service provider, but you will most likely need assistance installing the antennas and onboarding the new connection with integration into your network.



**Sentinel**

## Sentinel Care

---

Whilst at sea, our team are on-hand to ensure we provide a fast response to your technical questions. Personalised assistance from experts who are focused on customer care.

We also provide enhanced tailored packages including predictive maintenance "Health Checks" to ensure all systems are in top shape prior to cruising.



## IT Support

---

Your ETO/Engineers need qualified IT support to assist with yacht computing systems. We provide managed IT services including Ships Servers, Workstations, Licencing and End-Point-Management.

We can also provide an end-to-end Cyber solution, from IMO aligned Network Audit and Vulnerability Assessment to Crew Training and a Managed Detect and Response service.



## Cyber Security

---

Statistics show that yachts with weak network security are 38-50% more likely to suffer a cyber attack.

Our managed detect and response service continuously scans your network and IT assets for unusual activity. Any irregularities are investigated and neutralised by the SOC team to ensure your IT environment remains clear of Cyber threats before they become a problem.



Recent & future projects

Project Asia, 61m Hakvoort



M/Y Milele, 45m Hakvoort

© Leonardo Andreoni



M/Y Pink Shadow, 58m Damen

© Tom van Oossanen



M/Y Lusine, 60m Heesen

© David Churchill

50  
people

35  
years

500+  
projects

With offices in the United Kingdom and Monaco, Icon Connect is a world leader in bespoke design, supply and installation of “Smart Systems” for Super-homes and Super-yachts.

Our client focused business philosophy has allowed us to grow into an organisation looking after multiple worldwide assets, ranging from homes in London, Monaco, Mainland Europe and the Mediterranean islands to many of the world's largest Super-Yachts.

Luxury Smart Systems  
for Yacht Entertainment,  
IT and Security

*Technologies to  
enhance your life*

#### ICON CONNECT MONACO



1 rue Suffren Reymond  
98000 MC, Monaco



+377 97 98 24 87



monaco@iconconnect.com

#### ICON CONNECT LONDON



Focal Point, Lacerta Court  
Letchworth Garden City  
United Kingdom



+44 (0) 1462 680 066



iconinfo@iconconnect.com



[www.iconconnect.com](http://www.iconconnect.com)